

# FinOlex

## PIPES

Agriculture, Plumbing & Sanitation Pipes and Fittings  
[finolexpipes.com](http://finolexpipes.com)

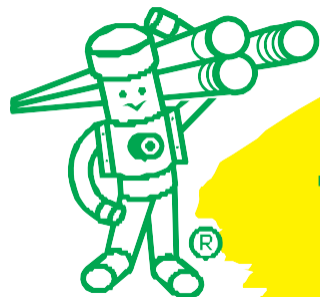
Price List w.e.f.: 01.04.2021

HQ – HISAR

(MENPAL – 9728997297)



Toll Free: 1800 200 3466 | [www.finolexpipes.com](http://www.finolexpipes.com)



# FinOlex

## PIPES

### Pvc Pipe List Price / Mtr

#### PVC - U AGRICULTURE SELFIT PIPE

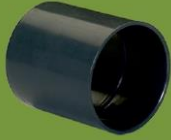
	Size MM	Size Inch	Class 1 2.5 Kgf	Class 2 4Kgf	Class 3 6Kgf	Class 4 8Kgf	Class 5 10 Kgf
	20 MM	1/2"	-	-	-	-	35.00
	25 MM	3/4"	-	-	-	49.00	52.00
	32 MM	1"	-	-	-	74.50	83.00
	40 MM	1 1/4"	-	-	84.00	-	123.00
	50 MM	1 1/2"	-	-	126.00	-	199.50
	63 MM	2"	-	139.00	200.00	257.00	307.50
	75 MM	2 1/2"	-	197.00	278.50	353.50	438.00
	90 MM	3"	177.00	275.50	401.50	509.00	621.50
	110 MM	4"	262.50	400.50	581.00	759.00	935.50
	140 MM	5"	417.50	652.00	951.00	1249.50	1505.00
	160 MM	6"	544.50	851.00	1230.50	1624.00	1957.00
	180 MM	7"	701.50	1104.00	1582.5	2038.50	2495.00
	200 MM	8"	864.00	1339.50	1939.00	2524.50	3083.00
	225 MM	9"	1145.50	1743.00	2533.50	3264.50	4029.00
	250 MM	10"	1383.50	2136.50	3171.00	4126.00	5016.00
	280 MM	11"	1772.50	2708.50	3970.00	5135.00	6282.50
	315 MM	12"	2227.00	3456.50	5058.00	6499.50	7968.50
	355 MM	14"	2822.00	4379.50	6414.50	8330.00	10127.00
	400 MM	16"	3587.50	5571.00	8204.50	11883.50	14752.50



# AGRICULTURE MOULDED FITTINGS



PVC COUPLER				
Size MM	Size Inch	Std. Pkg.	SP/Rate	
20 MM	½"	500	7.00	
25 MM	¾"	250	7.50	
32 MM	1"	200	10.50	
40 MM	1¼"	100	14.50	
50 MM	1½"	50	21.50	
63 MM	2"	50	34.00	
75 MM	2½"	40	44.00	
90 MM	3"	30	75.00	
110 MM	4"	15	121.00	
140 MM	5"	8	234.00	
160MM	6"X4KG	8	263.50	
160 MM	6"	8	317.00	
63 MM	2" 10kg	70	88.00	
75 MM	2½" 10kg	40	150.50	
90 MM	3" 10kg	30	251.00	



PVC ELBOW				
Size MM	Size Inch	Std. Pkg.	SP/Rate	
20 MM	½"	350	8.50	
25 MM	¾"	200	11.50	
32 MM	1"	125	16.00	
40 MM	1¼"	150	26.00	
50 MM	1½"	75	46.50	
63 MM	2"	50	63.50	
75 MM	2½"	30	83.50	
90 MM	3"	20	152.00	
110 MM	4"	10	218.00	
140 MM	5"	6	424.00	
160 MM	6"	4	638.50	
180 MM	7"	3	967.50	
200 MM	8"	5	1323.00	
10 KG ELBOW				
63 MM	2"	50	86.50	
75 MM	2½"	25	138.00	
90 MM	3"	17	234.00	
110 MM	4"	10	414.00	
140 MM	5"	6	1013.00	
160 MM	6"	4	1800.50	
200 MM	8"	6	3706.50	



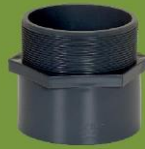
FTA				
Size MM	Size Inch	Std. Pkg.	SP/Rate	
20 MM	½"	500	7.00	
25 MM	¾"	300	9.00	
32 MM	1"	225	10.50	
40 MM	1¼"	100	20.50	
50 MM	1½"	75	26.50	
63 MM	2"	50	43.50	
75 MM	2½"	40	71.00	
90 MM	3"	40	85.50	
110 MM	4"	15	150.50	
140 MM	5"	12	221.50	
160 MM	6"	9	296.50	
63 MM	2"-10kg	70	105.00	
75 MM	2½"-10kg	40	173.50	
90 MM	3"-10kg	30	244.40	
110 MM	4"-10kg	15	515.50	



TEE				
Size MM	Size Inch	Std. Pkg.	SP/Rate	
20 MM	½"	250	11.00	
25 MM	¾"	150	15.00	
32 MM	1"	75	21.00	
40 MM	1¼"	100	35.00	
50 MM	1 1/2"	50	62.50	
63 MM	2"	40	73.00	
75 MM	2½"	20	108.50	
90 MM	3"	15	175.50	
110 MM	4"	8	295.00	
140 MM	5"	4	568.00	
160 MM	6"	3	934.50	
180 MM	7"	4	1262.00	
200 MM	8"	3	1729.50	
10 KG TEE				
63 MM	2"	30	115.00	
75 MM	2 1/2"	21	189.00	
90 MM	3"	13	315.50	
110 MM	4"	8	558.00	
140 MM	5"	4	1409.50	
160 MM	6"	3	2358.00	
200 MM	8"	4	4972.00	



MTA				
Size MM	Size Inch	Std. Pkg.	SP/Rate	
20 MM	½"	500	4.60	
25 MM	¾"	300	5.30	
32 MM	1"	200	8.00	
40 MM	1¼"	100	11.40	
50 MM	1½"	75	18.90	
63 MM	2"	100	38.00	
75 MM	2½"	50	51.00	
90 MM	3"	40	79.00	
110 MM	4"	20	125.50	
140 MM	5"	18	217.50	
160 MM	6"	9	307.50	
63 MM	2"-10kg	80	89.00	
75 MM	2½"-10kg	50	155.50	
90 MM	3"-10kg	30	261.00	
110 MM	4"-10kg	15	456.50	



REDUCER FTA				
Size MM	Size Inch	Std. Pkg.	SP/Rate	
25x20	¾" x ½"	300	8.00	
32x20	1" x ½"	200	10.00	
32x25	1" x ¾"	200	10.00	
63x50	2" x 1½"	120	41.00	
75x63	2½" x 2"	32	57.50	
90x63	3" x 2"	40	76.50	
90x75	3" x 2½"	40	78.50	
110x75	4" x 2½"	30	96.40	
110x90	4" x 3"	30	100.00	

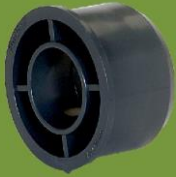


REDUCER - MTA				
Size MM	Size Inch	Std. Pkg.	SP/Rate	
25x20	¾" x ½"	400	8.00	
75x63	2½" x 2"	80	50.00	
90x75	3" x 2½"	50	78.50	



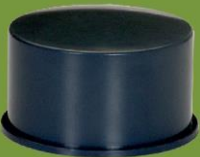
# AGRICULTURE MOULDED FITTINGS

## REDUCER BUSH



Size MM	Size Inch	Std, Pkg.	SP/Rate
25x20	¾" x ½"	600	4.50
32x25	1" x ¾"	400	7.00
40x32	1¼" x 1"	150	9.00
50x40	1½" x 1¼"	75	28.50
50x25	1½" x ¾"	125	31.50
50x32	1½" x 1"	125	30.00
63x40	2" x 1¼"	50	29.50
63x50	2" x 1½"	50	30.50
75x40	2½" x 1¼"	100	42.00
75x50	2½" x 1½"	100	89.00
75x63	2½" x 2"	100	41.00
90x63	3" x 2"	80	103.00
90x75	3" x 2½"	100	64.50
110x63	4" x 2"	40	80.50
110x75	4" x 2½"	40	117.50
110x90	4" x 3"	40	85.00
160x140	6" x 5"	20	179.00
180x140	7" x 5"	12	340.00
180x160	7" x 6"	12	313.50
200x110	8" x 4"	10	414.00
200x140	8" x 5"	10	424.50
200x160	8" x 6"	10	437.50
200x180	8" x 7"	10	387.00

## END CAP

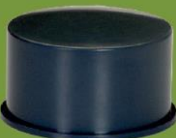


Size MM	Size Inch	Std, Pkg.	SP/Rate
20 MM	¾"	500	4.00
25 MM	¾"	400	5.50
32 MM	1"	300	8.00
40 MM	1¼"	100	14.50
50 MM	1½"	75	21.00
63 MM	2"	100	40.50
75 MM	2½"	100	53.50
90 MM	3"	50	80.00
110 MM	4"	30	129.00
140 MM	5"	15	183.50
160 MM	6"	12	221.50
180 MM	7"	10	350.00
200 MM	8"	6	468.50

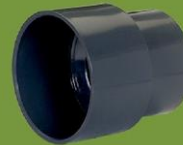
THREAD TYPE END CAP			
Size MM	Size Inch	Std, Pkg.	SP/Rate
40 MM	1¼"	150	16.00
50 MM	1 ½"	75	21.50
63 MM	2"	150	40.50
75 MM	2½"	75	43.00
90 MM	3"	50	53.00
110 MM	4"	30	79.50

## END CAP - 10kg



Size MM	Size Inch	Std, Pkg.	SP/Rate
75 MM	2 ½"	75	114.50
90 MM	3"	50	198.00
110 MM	4"	25	304.50
140 MM	5"	15	623.50
160 MM	6"	12	867.50
200 MM	8"	15	1776.50

## REDUCER



Size MM	Size Inch	Std, Pkg.	SP/Rate
25x20	¾" x ½"	400	7.00
32x20	1" x ½"	225	11.00
32x25	1" x ¾"	200	11.00
40x32	1¼" x 1"	100	17.50
50x32	1½" x 1" <sup>10 kg</sup>	60	40.50
50x40	1½" x 1¼"	50	32.00
63x40	2" x 1¼"	100	29.50
63x50	2" x 1½"	100	40.50
63x32	2" x 1"	100	30.50
75x40	2½" x 1¼"	80	43.50
75x50	2½" x 1½"	80	39.00
75x32	2½" x 1"	80	37.50
75x63	2½" x 2"	75	50.00
90x50	3" x 1½"	50	58.50
90x63	3" x 2"	50	67.00
90x75	3" x 2½"	40	68.00
110x63	4" x 2"	36	97.50
110x75	4" x 2½"	30	106.50
110x90	4" x 3"	30	113.00
140x75	5" x 2½"	14	184.00
140x90	5" x 3"	14	186.00
140x110	5" x 4"	16	181.00
160x90	6" x 3"	12	272.50
160x110	6" x 4"	12	268.50
160x140	6" x 5"	12	317.00
200X110	8" X4"	8	577.50
200X140	8" X5"	8	588.00
63x40	2" x 1¼" <sup>10 kg</sup>	80	33.40
63x50	2" x 1½" <sup>10 kg</sup>	80	37.00
180x110	7" x 4"	8	420.50
180x160	7" x 6"	8	454.50

## BRASS ITEM



Item	Size Inch	Std, Pkg.	SP/Rate
BRASS TEE	25x20	100	104.80
BRASS ELBOW	25x20	100	133.50
BRASS FTA	25x20	100	96.10

## BALL VALVE



Size MM	Size Inch	Std, Pkg.	SP/Rate
20 MM	¾"	120	96.00
25 MM	¾"	70	148.50
32 MM	1"	40	254.00
40 MM	1¼"	30	359.40
50 MM	1½"	20	505.00
63 MM	2"	12	788.50
75 MM	2½"	12	1684.00
90 MM	3"	7	2359.00
110 MM	4"	3	4746.50

## ELBOW 45° (SHOE)



Size MM	Size Inch	Std, Pkg.	SP/Rate
20 MM	¾"	400	6.50
25 MM	¾"	250	8.60
32 MM	1"	150	15.20



# AGRICULTURE MOULDED FITTINGS

## REDUCER TEE

Size MM	Size Inch	Std. Pkg.	SP/Rate
25x20	¾" x ½"	200	19.00
32x20	1" x ¾"	100	31.00
32x25	1" x ½"	100	34.00
40x20	1½" x ½"	70	46.00
40x25	1½" x ¾"	60	52.00
40x32	1½" x 1"	50	54.50
50x20	1½" x ½"	100	79.00
50x25	1½" x ¾"	100	79.00
50x32	1½" x 1"	80	87.00
50x40	1½" x 1½"	50	90.50
63x25	2" x ¾"	60	121.00
63x32	2" x 1"	50	133.50
63x50	2" x 1½"	40	63.00
75x40	2½" x 1½"	25	98.00
75x50	2½" x 1½"	25	105.00
75x63	2½" x 2"	25	110.50
90x50	3" x 1½"	18	153.50
90x63	3" x 2"	18	157.50
90x75	3" x 2½"	18	162.00
110x63	4" x 2"	10	229.00
110x75	4" x 2½"	8	235.50
110x90	4" x 3"	8	250.00
140x90	5" x 3"	4	461.50
140x110	5" x 4"	4	470.50
160x110	6" x 4"	3	842.50
160x140	6" x 5"	3	889.00



## REDUCER ELBOW

Size MM	Size Inch	Std. Pkg.	SP/Rate
25X20	¾" x ½"	320	14.50
110x63	4" x 2"	16	163.50
110x75	4" x 2½"	16	183.50
110x90	4" x 3"	16	202.50



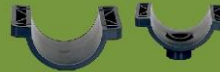
## SADDLE STRIP

Size MM	Size Inch	Std. Pkg.	SP/Rate
75x40	2½" x 1½"	75	34.00
75x50	2½" x 1½"	50	32.50
110x40	4" x 1½"	30	80.00
110x75	4" x 2½"	30	95.00
110x50	4" x 1½"	30	82.00



## SERVICE SADDLE

Size MM	Size Inch	Std. Pkg.	SP/Rate
63 MM	2"	25	143.00
75 MM	2½"	25	163.50
90 MM	3"	25	184.50
110 MM	4"	25	211.00
140 MM	5"	25	280.00
160 MM	6"	25	318.50
180 MM	7"	16	441.50
200 MM	8"	12	501.00



## TAILPIECE

Size MM	Size Inch	Std. Pkg.	SP/Rate
63 MM	2"	125	35.00
75 MM	2½"	100	44.00
90 MM	3"	50	69.00
110 MM	4"	20	106.50
140 MM	5"	15	172.50
160 MM	6"	12	254.00
180 MM	7"	8	409.50
200 MM	8"	8	444.00



## THRD. ELBOW

Size MM	Size Inch	Std. Pkg.	SP/Rate
20 MM	½"	250	12.90
25 MM	¾"	160	22.50
32MM	1"	100	35.50
40 MM	1½"	100	75.70
50 MM	1½"	75	87.90
63 MM	2"	60	147.80
75 MM	2½"	30	329.50
90 MM	3"	20	451.60



## BUTTERFLY VALVE GEAR TYPE

Size MM	Size Inch	Std. Pkg.	SP/Rate
90 MM	3"	5	5609.00
110 MM	4"	4	6057.50
125 MM	4½"	2	9879.00
160 MM	6"	2	11612.00
200 MM	8"	1	15573.00
250 MM	10"	1	24265.50
315 MM	12"	1	35626.00
400 MM	16"	1	109728.50



## FOOT VALVE

Size MM	Size Inch	Std. Pkg.	SP/Rate
90 MM	3"	8	2557.50



## BUTTERFLY VALVE HANDLE TYPE

Size MM	Size Inch	Std. Pkg.	SP/Rate
63 MM	2"	16	2378.50
75 MM	2½"	14	2708.50
90 MM	3"	10	3592.50
110 MM	4"	8	4147.00
125 MM	4½"	3	5345.50
160 MM	6"	4	9121.50
200 MM	8"	2	9346.00




## PVC SOLVENT CEMENT (SOLUTION)


Size	Std. Pkg.	SP / Rate
100 ML Tin	144	83.00
250 ML Tin	96	138.00
500 ML Tin	48	239.00
1000 ML Tin	24	377.00
250 ML Tin (Heavy)	96	202.00
500 ML Tin (Heavy)	48	352.00
1000 ML Tin (Heavy)	24	593.00






## ASTM PIPES & FITTINGS


UPVC SCH 40				
	Size MM	Size Inch	Std. Pkg.	Rate/Mtr.
	21.34	1/2"	30	85.50
	26.67	3/4"	25	114.00
	33.4	1"	15	167.00
	42.16	1 1/4"	10	224.50
	48.26	1 1/2"	10	267.50
	60.32	2"	5	359.50
	73.02	2 1/2"	5	552.00
	88.9	3"	3	743.50
	114.3	4"	2	1057.00
	168.28	6"	1	1911.50
	219.08	8" (3 mtr)	1	2846.00


COUPLER				
	Size MM	Size Inch	Std. Pkg.	SP/Rate
	21.34	1/2"	504	9.50
	26.67	3/4"	294	14.00
	33.4	1"	175	22.00
	42.16	1 1/4"	112	32.00
	48.26	1 1/2"	77	42.00
	60.32	2"	45	61.00
	73.02	2 1/2"	28	128.50
	88.9	3"	16	184.00
	114.3	4"	10	297.00
	168.28	6"	10	1133.00
	219.09	8"	4	4585.50


ELBOW 90°				
	Size MM	Size Inch	Std. Pkg.	SP/Rate
	21.34	1/2"	350	14.00
	26.67	3/4"	216	20.00
	33.4	1"	120	34.00
	42.16	1 1/4"	72	50.50
	48.26	1 1/2"	48	67.00
	60.32	2"	30	100.50
	73.02	2 1/2"	15	220.50
	88.9	3"	10	327.50
	114.3	4"	6	547.00
	168.28	6"	4	2521.50
	219.09	8"	2	9200


ELBOW 45°				
	Size MM	Size Inch	Std. Pkg.	SP/Rate
	21.34	1/2"	420	12.00
	26.67	3/4"	280	18.00
	33.4	1"	160	27.50
	42.16	1 1/4"	40	42.00
	48.26	1 1/2"	64	55.00
	60.32	2"	15	87.50
	73.02	2 1/2"	36	179.50
	88.9	3"	20	258.00
	114.3	4"	12	442.00
	168.28	6"	5	1775.50
	219.09	8"	2	7009.00

ASTM FAUCET VALVE				
	Size MM	Size Inch	Std. Pkg.	SP/Rate
	21.34	1/2"	180	102.00
	21.34	1/2"	180	96.00

UPVC SCH 80				
	Size MM	Size Inch	Std. Pkg.	Rate/Mtr.
	21.34	1/2"	30	107.00
	26.67	3/4"	25	145.00
	33.4	1"	15	213.00
	42.16	1 1/4"	10	292.50
	48.26	1 1/2"	10	354.00
	60.32	2"	5	491.00
	73.02	2 1/2"	5	748.50
	88.9	3"	3	1001.00
	114.3	4"	2	1464.50
	168.28	6"	1	2861.00
	219.08	8" (3 mtr)	1	4301.50

TEE				
	Size MM	Size Inch	Std. Pkg.	SP/Rate
	21.34	1/2"	256	18.50
	26.67	3/4"	176	26.00
	33.4	1"	84	45.50
	42.16	1 1/4"	56	66.50
	48.26	1 1/2"	35	89.00
	60.32	2"	24	143.00
	73.02	2 1/2"	12	283.00
	88.9	3"	6	413.50
	114.3	4"	4	731.00
	168.28	6"	3	2778.00
	219.09	8"	2	13001.50

MTA				
	Size MM	Size Inch	Std. Pkg.	SP/Rate
	21.34	1/2"	700	7.50
	26.67	3/4"	490	10.50
	33.4	1"	261	17.00
	42.16	1 1/4"	200	25.50
	48.26	1 1/2"	140	34.00
	60.32	2"	36	50
	73.02	2 1/2"	28	107.50
	88.9	3"	24	144.00
	114.3	4"	15	250.50

FTA				
	Size MM	Size Inch	Std. Pkg.	SP/Rate
	21.34	1/2"	490	9.50
	26.67	3/4"	315	14.00
	33.4	1"	210	21.50
	42.16	1 1/4"	128	32.00
	48.26	1 1/2"	96	39.50
	60.32	2"	24	60.00
	73.02	2 1/2"	25	110.50
	88.9	3"	20	151.50
	114.3	4"	10	244.00

TANK NIPPLE- Socket					
	Size MM	Size Inch	Std. Pkg.	Socket	SP/Rate
	21.34	1/2"	300		29.00
	26.67	3/4"	200		38.50
	33.4	1"	120		58.50
	42.16	1 1/4"	36	36	67.00
	48.26	1 1/2"	36	36	76.00
	60.32	2"	15		103.50
	73.02	2 1/2"	20		193.50
	88.90	3"	16		292.50

FinOlex  
PIPES

FinOlex  
PIPES

FinOlex  
PIPES

## ASTM SCH 80 FITTINGS



### REDUCER

Size MM	Size Inch	Std, Pkg.	SP/Rate
26.67	¾" x ½"	320	13.50
33.4	1" x ½"	210	23.50
33.4	1" x ¾"	200	20.00
42.16	1¼" x ½"	80	33.00
42.16	1¼" x ¾"	80	36.50
42.16	1¼" x 1"	60	31.00
42.16	1½" x ½"	60	38.50
42.16	1½" x ¾"	60	41.00
42.16	1½" x 1"	120	47.00
42.16	1½" x 1¼"	40	41.00
60.32	2" x ½"	45	57.60
60.32	2 x ¾"	45	58.50
60.32	2 x 1"	36	68.50
60.32	2 x 1 ¼"	36	71.00
60.32	2 x 1 ½"	36	71.50
73.02	2 ½" x ½"	48	91.00
73.02	2 ½" x ¾"	48	91.50
73.02	2½ x 1"	48	90.00
73.02	2½ x 1¼"	50	108.50
73.02	2½ x 1½"	40	112.00
73.02	2½ x 2"	36	114.50
88.90	3 x ½"	24	123.00
88.90	3 x ¾"	32	125.50
88.90	3 x 1"	32	129.50
88.90	3 x 1¼"	40	129.50
88.90	3 x 1½"	25	145.50
88.90	3 x 2"	20	152.00
88.90	3 x 2½"	25	170.00
114.3	4 x ½"	20	210.50
114.3	4 x ¾"	20	212.00
114.3	4 x 1"	20	213.50
114.3	4 x 1¼"	16	216.00
114.3	4 x 1½"	16	217.50
114.3	4 x 2"	16	222.00
114.3	4 x 2½"	12	272.00
114.3	4 x 3"	14	279.00



### REDUCER TEE

Size MM	Size Inch	Std, Pkg.	SP/Rate
26.67	¾" x ½"	68	27.30
33.4	1" x ½"	110	43.50
33.4	1" x ¾"	99	43.50
42.16	1¼" x ½"	24	63.00
42.16	1¼" x ¾"	24	67.00
42.16	1¼" x 1"	24	74.00
42.16	1½" x ½"	18	87.00
42.16	1½" x ¾"	18	90.00
42.16	1½" x 1"	18	95.50
42.16	1½" x 1¼"	15	101.50
60.32	2" x 1½"	9	138.00
60.32	2 x ¾"	9	139.00
60.32	2 x 1"	9	158.50
60.32	2 x 1 ¼"	9	148.50
60.32	2 x 1 ½"	9	154.00
73.02	2 ½" x ½"	14	243.00
73.02	2 ½" x ¾"	14	244.00
73.02	2½ x 1"	14	246.50
73.02	2½ x 1¼"	14	251.00
73.02	2½ x 1½"	14	252.50
73.02	2½ x 2"	14	260.00
88.90	3 x ½"	9	356.00
88.90	3 x ¾"	9	357.00
88.90	3 x 1"	9	359.50
88.90	3 x 1¼"	9	362.00
88.90	3 x 1½"	9	368.00
88.90	3 x 2"	9	375.00
88.90	3 x 2½"	9	393.50
114.3	4 x ½"	6	630.50
114.3	4 x ¾"	5	632.50
114.3	4 x 1"	5	636.00
114.3	4 x 1¼"	5	637.50
114.3	4 x 1½"	5	640.00
114.3	4 x 2"	5	646.50
114.3	4 x 2½"	5	663.00
114.3	4 x 3"	4	679.50



### BRASS ELBOW THRD

Size MM	Size Inch	Std, Pkg.	SP/Rate
21.34	½"	160	134.50
26.67	¾"	32	151.50
33.4	1"	20	293.50
26.67	¾" x ½"	160	134.50
33.4	1" x ½"	135	148.00
33.40	1" x ¾"	25	179.00



### UNION

Size MM	Size Inch	Std, Pkg.	SP/Rate
21.34	½"	200	35.50
26.67	¾"	128	46.00
33.4	1"	99	72.00
42.16	1¼"	27	99.00
48.26	1½"	18	142.00
60.32	2"	10	203.50



### BRASS TEE THRD

Size MM	Size Inch	Std, Pkg.	SP/Rate
21.34	½"	150	124.50
26.67	¾"	24	157.00
33.4	1"	16	302.50
26.67	¾" x ½"	144	138.00
33.4	1" x ½"	100	153.00
33.40	1" x ¾"	20	187.00



### BRASS FTA THRD

Size MM	Size Inch	Std, Pkg.	SP/Rate
21.34	½"	210	114.00
26.67	¾"	48	142.50
33.4	1"	38	247.00
42.16	1¼"	32	323.50
48.26	1½"	22	436.00
60.32	2"	9	691.00
26.67	¾" x ½"	180	144.50
33.4	1 x ½"	150	121.50



## ASTM SCH 80 FITTINGS



### REDUCER BUSH



Size MM	Size Inch	Std. Pkg.	SP/Rate
26.67	¾" x ½"	700	5.00
33.4	1 x ½"	420	11.50
33.4	1 x ¾"	490	7.50
42.16	1¼ x 1"	240	13.00
42.16	1¼ x ¾"	120	20.50
48.26	1½ x ½"	100	27.50
48.26	1½ x ¾"	90	28.00
48.26	1½ x 1"	200	24.50
48.26	1½ x 1¼"	200	13.00
60.32	2 x 1"	45	49.00
60.32	2 x 1¼"	54	45.50
60.32	2 x 1½"	48	36.00
73.02	2½ x 2"	50	63.00
88.90	3 x 2½"	32	241.00
114.3	4 x 3"	36	402.00

### END CAP



Size MM	Size Inch	Std. Pkg.	SP/Rate
21.34	½"	750	6.50
26.67	¾"	540	10.00
33.4	1"	315	15.00
42.16	1¼"	150	24.50
48.26	1½"	60	31.50
60.32	2"	36	48.50
73.02	2½"	60	82.00
88.90	3"	32	129.50
114.30	4"	18	240.50

### BRASS MTA



Size MM	Size Inch	Std. Pkg.	SP/Rate
21.34	½"	150	167.50
26.67	¾"	112	247.50
33.40	1"	80	310.50
42.16	1¼"	48	422.00
48.26	1½"	40	519.50
60.32	2"	10	779.50
26.67	¾" x ½"	144	160.00
33.4	1" x ½"	45	169.50

### PIPE CLIPS



Size MM	Size Inch	Std. Pkg.	SP/Rate
21.34	½"	300	2.50
26.67	¾"	1000	4.50
33.4	1"	800	5.50
42.16	1¼"	250	6.00
48.26	1½"	250	16.00
60.32	2"	75	18.50
73.02	2½"	100	22.00
88.90	3"	88	25.00
114.3	4"	60	29.50

### STEP OVER BEND



Size MM	Size Inch	Std. Pkg.	SP/Rate
21.34	½"	36	52.00
26.67	¾"	40	76.50
33.4	1"	16	117.00
42.16	1¼"	6	200.50
48.26	1½"	10	272.50
60.32	2"	6	451.00

### UPVC BALL VALVE



Size MM	Size Inch	Std. Pkg.	SP/Rate
21.34	½"	80	83.50
26.67	¾"	48	167.00
33.4	1"	24	317.50
42.16	1¼"	12	518.00
48.26	1½"	8	801.50
60.32	2"	4	1536.50
73.02	2½"	12	1353.00
88.90	3"	8	1920.50
114.30	4"	3	4426.00

### BALL VALVE



Size MM	Size Inch	Std. Pkg.	SP/Rate
21.34	½"	30	80.50
26.67	¾"	20	122.00
33.4	1"	10	210.00
42.16	1¼"	8	292.50
48.26	1½"	5	412.50
60.32	2"	3	765.50

### CROSS TEE



Size MM	Size Inch	Std. Pkg.	SP/Rate
21.34	½"	84	22.50
26.67	¾"	42	32.00
33.4	1"	30	51.00

### THR.END PLUG



Size MM	Size Inch	Std. Pkg.	SP/Rate
21.34	½"	500	12.00
26.67	¾"	240	12.50

### REDUCER ELBOW



Size MM	Size Inch	Std. Pkg.	SP/Rate
26.67	¾" x ½"	96	25.50
33.4	1" x ½"	160	34.00
33.4	1" x ¾"	140	40.50

### ASTM METAL CLAMP



Size MM	Size Inch	Std. Pkg.	SP/Rate
21.34	½"	300	17.50
26.67	¾"	300	16.50
33.40	1"	200	19.00
42.16	1¼"	150	18.50
48.26	1½"	150	20.00
60.32	2"	120	22.00

### UPVC SOLVENT (Heavy)



Size MM	Std. Pkg.	SP MDM/Rate
118 ML Tin	144	185.00
237 ML Tin	96	267.00
473 ML Tin	48	492.00

### UPVC SOLVENT (Medium)



Size MM	Std. Pkg.	SP MDM/Rate
118 ML Tin	144	153.00
237 ML Tin	96	219.00
473 ML Tin	48	438.00



# SWR SELFIT PIPES & FITTINGS



SWR PIPE TYPE A				
Size MM	Size Inch	Std. Pkg.	Rate/Mtr.	
75	2½"	-	213.50	
90	3"		274.00	
110	4"		386.00	
160	6"		800.00	

SWR PIPE TYPE B				
Size MM	Size Inch	Std. Pkg.	Rate/Mtr.	
75	2½"	-	358.00	
90	3"		435.50	
110	4"		531.50	
160	6"		993.50	

COUPLER				
Size MM	Size Inch	Std. Pkg.	SP/Rate	
63	2"	70	42.50	
75	2½"	60	58.00	
90	3"	40	83.50	
110	4"	40	91.00	
160	6"	10	252.50	

BEND Plain (DOUBLE SOCKET)				
Size MM	Size Inch	Std. Pkg.	SP/Rate	
40	1½"	180	21.00	
50	1½"	100	31.50	
63	2"	60	49.00	
75	2½"	36	72.50	
90	3"	38	94.50	
110	4"	24	142.00	

BEND 87.5° Plain				
Size MM	Size Inch	Std. Pkg.	SP/Rate	
50	1½"	100	31.00	
63	2"	45	59.00	
75	2½"	36	79.50	
90	3"	25	125.00	
110	4"	24	144.50	
160	6"	8	362.00	

DOOR BEND (DOUBLE SOCKET)				
Size MM	Size Inch	Std. Pkg.	SP/Rate	
40	1½"	160	30.00	
63	2"	40	67.00	
75	2½"	26	94.50	
90	3"	30	128.50	
110	4"	18	171.50	

DOOR BEND 87.5°				
Size MM	Size Inch	Std. Pkg.	SP/Rate	
50	1½"	80	39.00	
63	2"	35	102.00	
75	2½"	25	106.00	
90	3"	24	160.50	
110	4"	18	177.50	
160	6"	8	403.50	

TEE (DOUBLE SOCKET)				
Size MM	Size Inch	Std. Pkg.	SP/Rate	
40	1½"	120	29.50	
50	1½"	70	42.00	
63	2"	37	64.00	
75	2½"	24	85.50	
90	3"	27	130.50	
110	4"	15	180.50	

BEND 45°				
Size MM	Size Inch	Std. Pkg.	SP/Rate	
40	1½"	100	15.50	
50	1½"	50	23.50	
63	2"	60	45.00	
75	2½"	40	56.50	
90	3"	36	93.50	
110	4"	32	108.00	
140	5"	9	211.50	
160	6"	9	325.50	

DOOR TEE (DOUBLE SOCKET)				
Size MM	Size Inch	Std. Pkg.	SP/Rate	
63	2"	26	82.00	
75	2½"	18	106.50	
90	3"	18	164.50	
110	4"	10	209.00	

SINGLE TEE				
Size MM	Size Inch	Std. Pkg.	SP/Rate	
50	1½"	60	46.50	
63	2"	24	83.00	
75	2½"	24	98.50	
90	3"	16	172.00	
110	4"	15	179.50	
160	6"	10	511.50	


SINGLE Y				
Size MM	Size Inch	Std. Pkg.	SP/Rate	
50	1½"	50	58.00	
63	2"	24	94.50	
75	2½"	17	122.50	
90	3"	16	206.00	
110	4"	12	245.00	
160	6"	8	666.00	


MULTIFLOOR TRAP WITH JALI				
Size MM	Size Inch	Std. Pkg.	SP/Rate	
110X75	4" x 2½"	24	208.00	
110(77HT)	4" x 2½"	24	202.00	
110X75(W/O)	4" x 2½"	24	160.50	


NAHANI TRAP WITHOUT JALI				
Size MM	Size Inch	Std. Pkg.	SP/Rate	
110x75	4" x 2½"	24	121.50	
110x90	4" x 3"	24	134.00	
110x110	4" x 4"	24	166.50	


# SWR SELFIT PIPES & FITTINGS





JALI				
	Size MM	Size Inch	Std. Pkg.	SP/Rate
	110	4"	150	19.20
	110	4" (Square)	54	45.80


CLEANING PIPE				
	Size MM	Size Inch	Std. Pkg.	SP/Rate
	75	2½"	25	102.00
	110	4"	20	191.50
	160	6"	15	450.00


DOUBLE Y				
	Size MM	Size Inch	Std. Pkg.	SP/Rate
	75	2½"	20	161.50
	110	4"	6	343.00
	160	6"	4	841.50


CROSS TEE				
	Size MM	Size Inch	Std. Pkg.	SP/Rate
	75	2½"	12	127.50
	110	4"	10	250.00

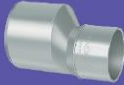
RED. TEE				
	Size MM	Size Inch	Std. Pkg.	SP/Rate
	90x75	3" x 2½"	16	159.00
	110x75	4" x 2½"	18	179.50
	160x110	6" x 4"	11	449.50


RED. DOOR TEE				
	Size MM	Size Inch	Std. Pkg.	SP/Rate
	90x75	3" x 2½"	16	198.50
	110x75	4" x 2½"	15	218.50
	160x110	6" x 4"	10	558.50


DOUBLE Y WITH DOOR				
	Size MM	Size Inch	Std. Pkg.	SP/Rate
	160	6"	4	557.30


REDUCING Y				
	Size MM	Size Inch	Std. Pkg.	SP/Rate
	110x75	4" x 2½"	12	223.00
	160 X 110	6" x 4"	10	473.00


P TRAP				
	Size MM	Size Inch	Std. Pkg.	SP/Rate
	75	2½"	15	179.50
	110x110	4" x 4"	10	343.00
125x110	5" x 4"	10	355.00	


SWR REDUCER				
	Size MM	Size Inch	Std. Pkg.	SP/Rate
	110x75	4" x 2½"	60	91.00
	110x90	4" x 3"	40	104.00
	160x110	6" x 4"	25	201.00


GULLY TRAP SINGLE				
	Size MM	Size Inch	Std. Pkg.	SP/Rate
	160x110	6" x 4" (single)	7	574.50
	160x110	6" x 4" (double)	6	617.00


SINGLE Y WITH DOOR				
	Size MM	Size Inch	Std. Pkg.	SP/Rate
	50	1½"	44	65.70
	63	2"	18	143.50
	75	2½"	12	157.00
	90	3"	12	238.00
	110	4"	10	297.50
	160	6"	8	717.00

SINGLE TEE WITH DOOR				
	Size MM	Size Inch	Std. Pkg.	SP/Rate
	50	1½"	50	52.50
	63	2"	18	130.00
	75	2½"	20	121.00
	90	3"	15	201.00
	110	4"	13	237.50
	160	6"	8	552.00


S-TRAP				
	Size MM	Size Inch	Std. Pkg.	SP/Rate
	110 x 110	4" x 4"	7	705.50
	125 x 110	5" x 4"	7	710.50


Q-TRAP				
	Size MM	Size Inch	Std. Pkg.	SP/Rate
	110 x 110	4" x 4"	8	511.00
	125 x 110	5" x 4"	8	515.50


REDUCING Y - DOOR				
	Size MM	Size Inch	Std. Pkg.	SP/Rate
	110 x 75	4" x 2½"	10	262.00
	160 x 110	6" x 4"	10	534.50


BUSHNET				
	Size MM	Size Inch	Std. Pkg.	SP/Rate
	160 X 110	6" x 4"	32	72.90


## SWR SELFIT PIPES & FITTINGS

PIPE CLIP				
	Size MM	Size Inch	Std. Pkg.	SP/Rate
	75	2½"	150	20.00
	90	3"	150	18.50
	110	4"	175	25.50
	160	6"	100	47.00

VENT COWL				
	Size MM	Size Inch	Std. Pkg.	SP/Rate
	63	2"	75	14.50
	75	2½"	175	19.50
	90	3"	80	28.50
	110	4"	140	30.50
	160	6"	33	82.00


SQUARE GULLY TRAP				
	Size MM	Size Inch	Std. Pkg.	SP/Rate
	75	2½" (W/O JALI)	8	456.00
	110	4" (WITH JALI)	8	499.00


SWEPT TEE				
	Size MM	Size Inch	Std. Pkg.	SP/Rate
	75	2½"	19	111.50
	110	4"	10	237.00
	75	2½" (DOOR)	14	132.00
	110	4" (DOOR)	10	276.50


DOOR CAP				
	Size MM	Size Inch	Std. Pkg.	SP/Rate
	75	2½"	150	24.50
	110	4"	150	34.00
160	6"	100	38.00	


FinOlex  
PIPES


FinOlex  
PIPES

HEIGHT RISER SWR 6"				
	Size MM	Size Inch	Std. Pkg.	SP/Rate
	110x75x50	4"x4"	12	166.50
	110x50/44	5"x4"	12	162.00

SOCKET PLUG				
	Size MM	Size Inch	Std. Pkg.	SP/Rate
	75	2½"	100	33.50
	110	4"	36	66.00

REVERSE Y				
	Size MM	Size Inch	Std. Pkg.	SP/Rate
	75(Door)	2½"	13	188.00
	75	2½"	15	157.00



SWR SOLVENT			
	Size	Std. Pkg.	SP MDM/Rate
	100 ML Tin	144	83.00
	250 ML Tin	96	138.00
	500 ML Tin	48	239.00
	100 ML Tin	24	377.00

PRIMER FOR CPVC & UPVC			
	Size	Std. Pkg.	SP/Rate
	237 ML	96	291.50
	473 ML	48	400.00



## SWR PIPES & FITTINGS

### Features & Benefits:






-  Leak-proof and maintenance free joints.
-  High degree of accuracy at manufacturing ensures dimensional control.
-  Non-reactive to acids, alkalis, effluents, salt and minerals.
-  Smooth surface ensures high flow rates and no scaling, depositions or choking.
-  UV Stabilized to ensure long life.
-  Light weight facilitates easy and inexpensive transport and installation.
-  The pipes are self-extinguishing and do not support combustion.
-  Corrosion and rust proof which confirms longer durability of the product.
-  Comes with pre-fitted integrated rings for faster installation.
-  The elastomeric EPDM rings ensures hydraulic tightness, enables the joints to withstand high pressures (5 kgf/cm<sup>2</sup>).
-  Leak-proof joints sustain thermal contraction and expansion.
-  Joints with integrated rings can easily be re-opened later for any adjustments if required.
-  Fittings are manufactured using PVC-U Granules that add a glossy finish to the product.



### Reassurance

-  Ideal for hot water up to 93°C.
-  Lowest bacterial growth.
-  Manufactured using lead free and environment friendly compound.
-  Unaffected by chlorine in water.
-  Safe for potable water systems.
-  Cost effective.  Easy installation.
-  100% leak proof joints.
-  Outstanding fire safety profile, does not support fire.
-  Insulating properties result in high energy saving.
-  Strong quality control hence no batch variation.
- 

### Reliability


-  25% higher pressure rating for the same wall thickness ensuring higher safety factor and product reliability.
-  High impact strength.
-  UV stabilised and designed for over 50 years life.
-  No scaling, pitting or leaching formation.
-  No corrosion thus uncompromised water quality.

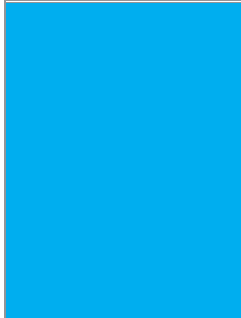


IS 15778





# CPVC PIPES & FITTINGS


CPVC PIPE SDR 11					
	Size MM	Size Inch	5 Mtr.	3 Mtr.	Rate/Mtr.
	15.9	½"	60	100	82.00
	22.2	¾"	40	50	125.50
	28.6	1"	25	30	199.00
	34.9	1¼"	15	20	306.00
	41.3	1½"	10	15	419.00
	54	2"	6	10	703.00
	65	2½" SCH 80	1	5	1474.50
	80	3" SCH 80	3	3	2096.00
	100	4" SCH 80	2	2	3051.50
	150	6" SCH 80	1	1	6373.50


CPVC PIPE SDR 13.5					
	Size MM	Size Inch	5 Mtr.	3 Mtr.	Rate/Mtr.
	15.9	½"	60	100	70.00
	22.2	¾"	40	50	115.00
	28.6	1"	25	30	167.50
	34.9	1¼"	15	20	258.00
	41.3	1½"	10	15	354.00
	54	2"	6	10	594.00
	65	2½" SCH 40	1	5	1109.50
	80	3" SCH 40	3	3	1525.50
	100	4" SCH 40	2	2	2258.50
	150	6" SCH 40	1	1	4146.00


ELBOW 90°				
	Size MM	Size Inch	Std. Pkg.	SP / Rate
	15.9	½"	1250	18.00
	22.2	¾"	480	19.50
	28.6	1"	250	41.00
	34.9	1¼"	135	89.00
	41.3	1½"	88	166.50
	54	2"	16	327.50
	65	2½"	5	964.50
	80	3"	3	1416.50
	100	4"	2	2407.50


FTA				
	Size MM	Size Inch	Std. Pkg.	SP / Rate
	15.9	½"	200	21.00
	22.2	¾"	500	30.50
	28.6	1"	300	45.50
	34.9	1¼"	40	108.00
	41.3	1½"	30	150.50
	54	2"	20	228.00
	65	2½"	12	389.00
	80	3"	6	632.50
	100	4"	3	1052.00
	22.2	¾" x ½"	160	36.50


MTA				
	Size MM	Size Inch	Std. Pkg.	SP / Rate
	15.9	½"	300	16.50
	22.2	¾"	700	24.00
	28.6	1"	390	35.00
	34.9	1¼"	75	59.00
	41.3	1½"	50	86.50
	54	2"	25	160.50
	65	2½"	16	400.50
	80	3"	8	549.50
	100	4"	4	1062.50
	22.2	¾" x ½"	150	30.00
	28.6	1" x ¾"	180	40.50

ELBOW 45°				
	Size MM	Size Inch	Std. Pkg.	SP / Rate
	15.9	½"	250	19.50
	22.2	¾"	600	29.00
	28.6	1"	306	50.00
	34.9	1¼"	40	104.00
	41.3	1½"	25	157.00
	54	2"	12	326.50
	65	2½"	6	840.50
	80	3"	4	1194.50
	100	4"	2	2162.50

TEE				
	Size MM	Size Inch	Std. Pkg.	SP / Rate
	15.9	½"	200	23.00
	22.2	¾"	340	33.00
	28.6	1"	180	51.00
	34.9	1¼"	100	112.00
	41.3	1½"	56	202.50
	54	2"	10	410.50
	65	2½"	4	1309.00
	80	3"	3	1940.50
100	4"	3	3255.50	

COUPLER				
	Size MM	Size Inch	Std. Pkg.	SP / Rate
	15.9	½"	350	13.50
	22.2	¾"	750	16.50
	28.6	1"	350	27.50
	34.9	1¼"	220	55.50
	41.3	1½"	140	100.00
	54	2"	20	198.50
	65	2½"	8	596.50
	80	3"	6	844.00
	100	4"	3	1318.50


TANK NIPPLE					
	Size MM	Size Inch	Std. Pkg.	SP / Rate	Socket Type
	15.9	½"	150	57.00	46.50
	22.2	¾"	100	67.50	62.50
	28.6	1"	80	101.00	82.00
	34.9	1¼"	45	150.50	133.00
	41.3	1½"	24	220.50	188.00
	54	2"	18	334.50	292.50


BALL VALVE				
	Size MM	Size Inch	Std. Pkg.	SP / Rate
	15.9	½"	50	97.00
	22.2	¾"	48	171.00
	28.6	1"	24	320.00
	34.9	1¼"	12	563.00
	41.3	1½"	8	884.00
	54	2"	4	1553.50

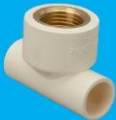






# CPVC PIPES & FITTINGS


BRASS MTA				
	Size MM	Size Inch	Std. Pkg.	SP / Rate
	15.9	½"	60	162.50
	22.2	¾"	180	219.00
	28.6	1"	90	339.00
	34.9	1¼"	18	673.50
	41.3	1½"	16	839.50
	54	2"	6	1555.00
	22.2	¾"x½"	200	133.00
	28.6	1" x ½"	75	238.00
	28.6	1" x ¾"	80	229.50


UNION				
	Size MM	Size Inch	Std. Pkg.	SP / Rate
	15.9	½"	100	54.50
	22.2	¾"	160	90.50
	28.6	1"	120	114.50
	34.9	1¼"	25	175.50
	41.3	1½"	15	291.00
	54	2"	8	504.00


BRASS TEE				
	Size MM	Size Inch	Std. Pkg.	SP / Rate
	15.9	½"	100	86.00
	22.2	¾"	60	139.00
	28.6	1"	28	280.50
	34.9	1¼"	25	592.50
	22.2	¾"x½"	200	94.00
	28.6	1"x½"	160	161.00
	28.6	1" x ¾"	40	213.50
	34.9	1¼"x½"	24	273.50


REDUCER TEE				
	Size MM	Size Inch	Std. Pkg.	SP / Rate
	22.2	¾' x ½"	80	46.50
	28.6	1" x ½"	50	75.50
	28.6	1" x ¾"	40	87.50
	34.9	1¼" x ½"	30	137.50
	34.9	1¼" x ¾"	25	158.00
	34.9	1¼" x 1"	30	130.50
	41.3	1½" x ½"	20	221.00
	41.3	1½" x ¾"	20	215.50
	41.3	1½" x 1"	20	218.00
	41.3	1½" x 1¼"	20	210.50
	54	2" x ¾"	14	415.00
	54	2" x 1"	12	403.00
	54	2" x 1¼"	10	445.50
	54	2" x 1½"	10	408.00
	65	2½" x ½"	8	1207.50
	65	2½" x ¾"	8	1232.00
	65	2½" x 1"	8	1233.50
	65	2½" x 1¼"	8	1313.50
	65	2½" x 1½"	8	1319.00
	65	2½" x 2"	7	1399.50
	80	3" x ½"	6	2046.00
	80	3" x ¾"	6	2076.00
	80	3" x 1"	6	2095.50
	80	3" x 1¼"	6	2110.50
	80	3" x 1½"	4	2140.00
	80	3" x 2"	4	2164.00
	80	3" x 2½"	4	2179.00

BRASS ELBOW				
	Size MM	Size Inch	Std. Pkg.	SP / Rate
	15.9	½"	270	72.50
	22.2	¾"	90	101.50
	28.6	1"	40	392.50
	34.9	1¼"	20	508.50
	22.2	¾"x½"	450	75.50
	28.6	1"x½"	200	142.00
	28.6	1" x ¾"	60	209.00

REDUCER BUSH				
	Size MM	Size Inch	Std. Pkg.	SP / Rate
	22.2	¾' x ½"	400	12.00
	28.6	1" x ½"	200	27.00
	28.6	1" x ¾"	900	20.00
	34.9	1¼" x ½"	150	50.00
	34.9	1¼" x ¾"	120	38.00
	34.9	1¼" x 1"	125	32.00
	41.3	1½" x ½"	80	75.50
	41.3	1½" x ¾"	75	60.00
	41.3	1½" x 1"	75	59.00
	41.3	1½" x 1¼"	100	42.50
	54	2" x ½"	40	120.00
	54	2" x ¾"	40	112.00
	54	2" x 1"	40	112.00
	54	2" x 1¼"	30	121.00
	54	2" x 1½"	40	100.00

BRASS FTA				
	Size MM	Size Inch	Std. Pkg.	SP / Rate
	15.9	½"	60	148.50
	22.2	¾"	45	209.00
	28.6	1"	30	324.00
	34.9	1¼"	14	662.50
	41.3	1½"	14	740.50
	54	2"	6	1422.00
	22.2	¾"x½"	300	95.50
	28.6	1" x ½"	90	115.00
	28.6	1" x ¾"	60	121.00
	34.9	1¼" x ½"	48	122.50


TRANS BUSH				
	Size MM	Size Inch	Std. Pkg.	SP / Rate
	15.9	½" x ½"	300	13.50
	22.2	¾" x ¾"	900	17.50
	28.6	1" x 1"	100	25.50
	34.9	1¼" x 1¼"	100	43.50
	41.3	1½" x 1½"	40	55.50
	54	2" x 2"	20	83.50


STEP OVER BEND				
	Size MM	Size Inch	Std. Pkg.	SP / Rate
	15.9	½"	50	62.50
	22.2	¾"	120	91.00
	28.6	1"	20	168.00
	34.9	1¼"	30	285.50
	41.3	1½"	20	294.00
	54	2"	6	642.50




# CPVC PIPES & FITTINGS




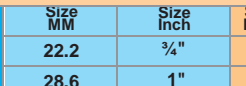
CROSS TEE				
	Size MM	Size Inch	Std. Pkg.	SP / Rate
	15.9	½"	150	31.50
	22.2	¾"	75	65.00
	28.6	1"	40	110.00
	34.9	1¼"	20	117.50
	41.3	1½"	18	190.50
	54	2"	8	349.50


PIPE CLIP				
	Size MM	Size Inch	Std. Pkg.	SP / Rate
	15.9	½"	600	4.50
	22.2	¾"	600	5.50
	28.6	1"	360	6.00
	34.9	1¼"	225	10.50
	41.3	1½"	210	12.00
	54	2"	120	16.50


METAL CLAMP				
	Size MM	Size Inch	Std. Pkg.	SP / Rate
	15.9	½"	800	16.50
	22.2	¾"	500	19.50
	28.6	1"	400	20.50
	34.9	1¼"	300	22.50
	41.3	1½"	250	28.00
	54	2"	200	29.00


CPVC MIXER				
	Size Inch	Description	Std. Pkg.	SP / Rate
	¾" x ½"	6" All Top	6	402.00
	¾" x ½"	6" Top Bottom	6	402.00
	¾" x ½"	6" Top Side	6	402.00
	¾" x ½"	6" HU CD	6	402.00
	¾" x ½"	6" HS CD	6	402.00
	¾" x ½"	7" All Top	6	418.00
	¾" x ½"	7" Top Bottom	6	418.00
	¾" x ½"	7" Top Side	6	418.00
	¾" x ½"	7" HU CD	6	418.00
	¾" x ½"	7" HS CD	6	418.00


SWEEP BEND				
	Size MM	Size Inch	Std. Pkg.	SP / Rate
	22.2	¾"	100	45.50
	28.6	1"	50	78.50
	34.9	1¼"	30	128.00

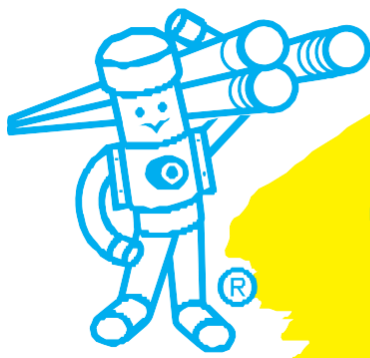
NON RETURN VALVE				
	Size MM	Size Inch	Std. Pkg.	SP / Rate
	22.2	¾"	20	186.50
	28.6	1"	20	325.00

CPVC SOLVENT CEMENT (SOLUTION)			
	Size MM	Std. Pkg.	SP / Rate
	59 ML Tin	48	126.00
	118 ML Tin	192	198.00
	237 ML Tin	96	337.00
	473 ML Tin	24	611.00
	946 ML Tin	24	1179.00

RED. ELBOW				
	Size MM	Size Inch	Std. Pkg.	SP / Rate
	22.2	¾" x ½"	150	30.50
	28.6	1" x ½"	180	48.50
	28.6	1" x ¾"	275	70.00
	34.9	1¼" x ½"	105	121.50
	34.9	1¼" x ¾"	75	89.00
	34.9	1¼" x 1"	75	94.00
	41.3	1½" x ¾"	40	119.50
	41.3	1½" x 1"	36	145.00
	54	2" x 1"	24	337.00

ENDCAP				
	Size MM	Size Inch	Std. Pkg.	SP / Rate
	15.9	½"	400	10.50
	22.2	¾"	1470	14.50
	28.6	1"	750	23.00
	34.9	1¼"	100	45.50
	41.3	1½"	60	66.50
	54	2"	30	136.00
	65	2½"	14	368.50
	80	3"	8	553.50
	100	4"	5	959.00

REDUCER				
	Size MM	Size Inch	Std. Pkg.	SP / Rate
	22.2	¾" x ½"	200	21.50
	28.6	1" x ½"	150	32.00
	28.6	1" x ¾"	510	36.00
	34.9	1¼" x ½"	60	75.50
	34.9	1¼" x ¾"	60	74.00
	34.9	1¼" x 1"	60	79.00
	41.3	1½" x ½"	40	110.00
	41.3	1½" x ¾"	40	118.50
	41.3	1½" x 1"	40	108.00
	41.3	1½" x 1¼"	40	104.00
	54	2" x ½"	108	226.00
	54	2" x ¾"	16	251.50
	54	2" x 1"	30	185.00
	54	2" x 1¼"	20	202.50
	54	2" x 1½"	30	252.00
	65	2½" x ½"	24	582.50
	65	2½" x ¾"	24	601.50
	65	2½" x 1"	24	603.00
	65	2½" x 1¼"	24	675.50
	65	2½" x 1½"	24	678.00
	65	2½" x 2"	24	730.00
	80	3" x ½"	18	1004.00
	80	3" x ¾"	18	1011.00
	80	3" x 1"	18	1020.50
	80	3" x 1¼"	18	1026.00
	80	3" x 1½"	18	1035.00
	80	3" x 2"	18	1047.00
	80	3" x 2½"	18	931.50
	100	4" x ½"	10	1852.00
	100	4" x ¾"	10	1869.50
100	4" x 1"	10	1880.50	
100	4" x 1¼"	10	1892.50	
100	4" x 1½"	10	1910.00	
100	4" x 2"	6	1922.00	
100	4" x 2½"	10	1931.00	
100	4" x 3"	10	1949.00	



# FinOlex

## PIPES



Toll Free : 1800 200 3466 | [www.finolexpipes.com](http://www.finolexpipes.com)